



The Low Power Programmable Leader

Corporate Overview

July 2023

Safe Harbor Statement

This presentation contains forward-looking statements within the meaning of the Private Securities Litigation Reform Act of 1995 that involve estimates, assumptions, risks and uncertainties. Any statements about our expectations, beliefs, plans, objectives, assumptions or future events or performance are not historical facts and may be forward-looking. Such forward-looking statements include, but are not limited to, statements relating to new greenfield growth opportunities; our market position; our product portfolio expansion; our ability to solve customer challenges; and growth in our customer base. Other forward-looking statements may be indicated by words such as “will,” “could,” “should,” “would,” “may,” “expect,” “plan,” “project,” “anticipate,” “intend,” “forecast,” “future,” “believe,” “estimate,” “predict,” “propose,” “potential,” “continue” or the negative of these terms or other comparable terminology. Factors that may cause actual results to differ materially from the forward-looking statements in this presentation include global economic conditions which may affect customer demand, pricing and inflationary pressures, competitive actions, and international trade disputes and sanctions, the on-going Covid-19 pandemic and those risks more fully described in Item 1A in the Company’s Annual Report on Form 10-K for the fiscal year ended December 31, 2022, and as may be supplemented from time-to-time in Lattice’s other filings with the Securities and Exchange Commission, all of which are expressly incorporated herein by reference. You should not unduly rely on forward-looking statements because actual results could differ materially from those expressed in any forward-looking statements. In addition, any forward-looking statement applies only as of the date on which it is made. The Company does not intend to update or revise any forward-looking statements, whether as a result of events or circumstances after the date hereof or to reflect the occurrence of unanticipated events.

Use of non-GAAP Financial Information

To supplement the Company's financial statements presented on a GAAP basis, the company has provided non-GAAP financial information in this presentation, including non-GAAP gross margin, earnings per share, operating profit, and operating expenses. Non-GAAP financial information is not meant as a substitute for GAAP results but is included because management uses such information to evaluate and manage the company and believes such information is useful to our investors for informational and comparative purposes. These non-GAAP measures should be considered in addition to, and not as a substitute for, the results prepared in accordance with GAAP. See appendix in Q1'23 and FY'22 earnings reports for reconciliation to most comparable GAAP measure.

Agenda

1



Company Overview

2



Products & Solutions

3



End Markets & Applications

4



Financials

Our Mission



The Low Power Programmable Leader

Lattice Semiconductor Overview

APPLICATIONS & MARKETS

We enable secure control, flexible connectivity, and low power compute acceleration



COMMUNICATIONS & COMPUTING

43%



INDUSTRIAL & AUTOMOTIVE

48%



CONSUMER

9%

WORLD CLASS SUPPLIER

#1

World's largest volume supplier of FPGA

Tier 1

Supplier with 40 years of innovation



GROWING CUSTOMER BASE



GLOBAL SUPPORT



Lattice Executive Leadership Team



Jim Anderson
CEO



Sherri Luther
CFO



Mark Nelson
Sales



Esam Elashmawi
Strategy & Marketing



Steve Douglass
Research & Development



Glenn O'Rourke
Operations & Quality



Tracy Feanny
General Counsel



Terese Kemble
Human Resources



Denis Lavallee
Miramatrix

Holding Ourselves to the Highest ESG Standards

CULTURE OF INNOVATION



ENVIRONMENTALLY CONSCIOUS



INCLUSION & SOCIAL WELLBEING



TRANSPARENCY & INTEGRITY



GSA MOST RESPECTED PUBLIC COMPANY THREE YEARS IN A ROW



STRONG & GROWING RECOGNITION FOR CLEANTECH PRODUCT INNOVATION



Agenda

1 Company Overview

2 Products & Solutions

3 End Markets & Applications

4 Financials

Lattice Value Proposition

Smallest
SIZE



Lowest
POWER



Highest
SECURITY



RELIABLE
by Design



EASE
of Use



Lattice FPGA Portfolio

PLATFORM

DEVICE FAMILIES

LATTICE
AVANT™



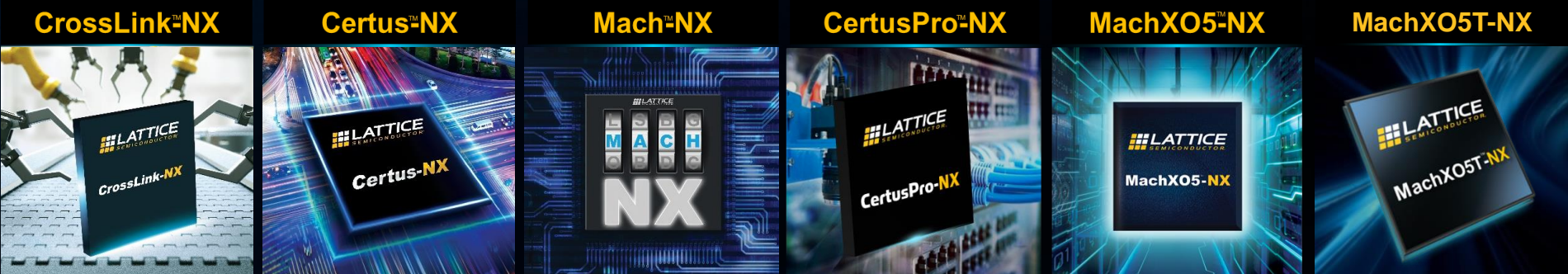
SOLVING KEY CHALLENGES AT THE EDGE

PROCESSING DATA

ARTIFICIAL INTELLIGENCE



LATTICE
NEXUS™



Embedded Vision Processing

General Purpose Processing

Next Gen Hardware Security

Advanced General Purpose Processing

Enhanced System Monitor and Control

Advanced System Control

FPGA PLATFORM LEADERSHIP

LATTICE NEXUS™

Architected for applications requiring up to 10G SERDES and up to 100k LCs



LATTICE AVANT™

Architected for applications requiring up to 25G SERDES and up to 500k LCs



**LOWER
POWER**



**FASTER
PERFORMANCE**



**SMALLER
SIZE**

Software Solution Stack Portfolio



LATTICE sensAI™

Low Power Edge AI

High Performance Inference Under 1W

Supports Industry Standard ML Frameworks

Complete Solution Enablement



LATTICE mVISION™

Low Power Embedded Vision

Flexible Image Sensor Bridging & Aggregation

Image Processing Integration

Complete Solution Enablement



LATTICE Sentri™

Cyber Resilient Root of Trust

Secure Hardware Creates Root-of-Trust for Systems

Cryptographically Secured Supply Chain

Protection Against Cloning, Counterfeiting, Trojan Insertion, & Simulation



LATTICE Automate™

Accelerating Factory Automation

Accelerates industrial automation development

Supports use cases like motor control, real-time networking, & predictive maintenance

Complete solution enablement



LATTICE ORAN™

Enabling ORAN Deployment

Enables zero trust security and data protection in networks

Flexible, Tight Fronthaul Synchronization

Acceleration with Low Power



LATTICE Drive™

Adaptable Automotive Design

DisplayPort connectivity

Video scaling up to 4K

Local dimming for contrast enhancement

Bridging & networking

Launched July 2023

Leadership Computer Vision Capabilities



Presence Detection

Depth Sensing

3D Head & Gesture Tracking

Face ID & Landmarks Tracking

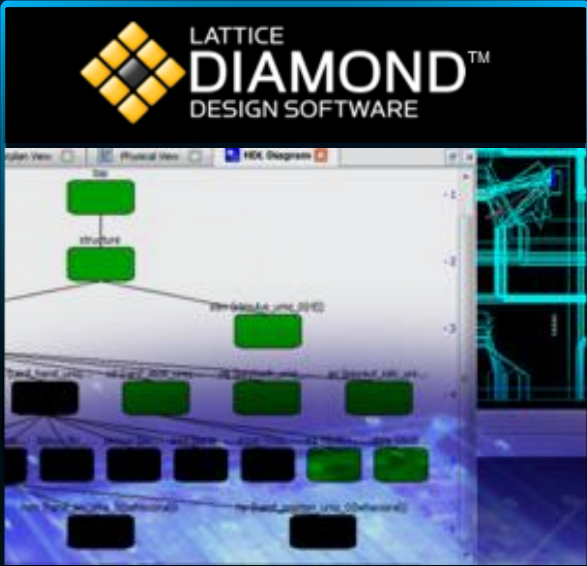
Eye Feature Detection & Tracking

Human Skeleton Detection

Object Detection

Advanced AI Technology for the Edge

Easy-to-use Software Tools



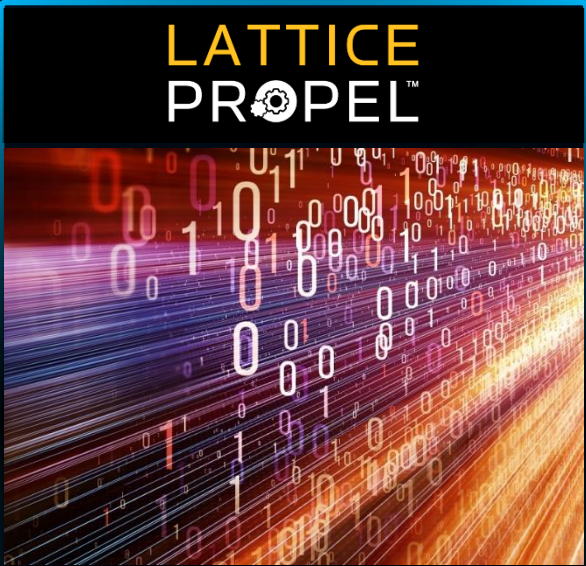
Powerful FPGA Design & Verification Environment

- Easy Design Exploration
- Easy to Use Powerful Tools
- Optimized for Lattice Devices



Best-in-class, Easy-to-use Design Software

- Simplified Flow for Faster Design
- Increase Re-use with IP Tools
- Leading Synthesis & Simulation



Complete Toolset for Embedded System Design

- IP System Integration Environment
- Software Development Kit & Libraries
- Build, Compile, Analyze, Debug



Advanced Computer Vision Software for the Edge

- Security and Privacy Protections
- Digital Wellbeing Capabilities
- Facilitates Intelligent Collaboration & Productivity

RAPID PRODUCT PORTFOLIO EXPANSION



Agenda

- 1 Company Overview
- 2 Products & Solutions
- 3 End Markets & Applications**
- 4 Financials

Positioned in Growing Markets

COMMUNICATIONS



5G Wireless
Switches/Routers

COMPUTING



Servers
Client

INDUSTRIAL



Industrial IoT
Factory Automation

AUTOMOTIVE



ADAS
Infotainment

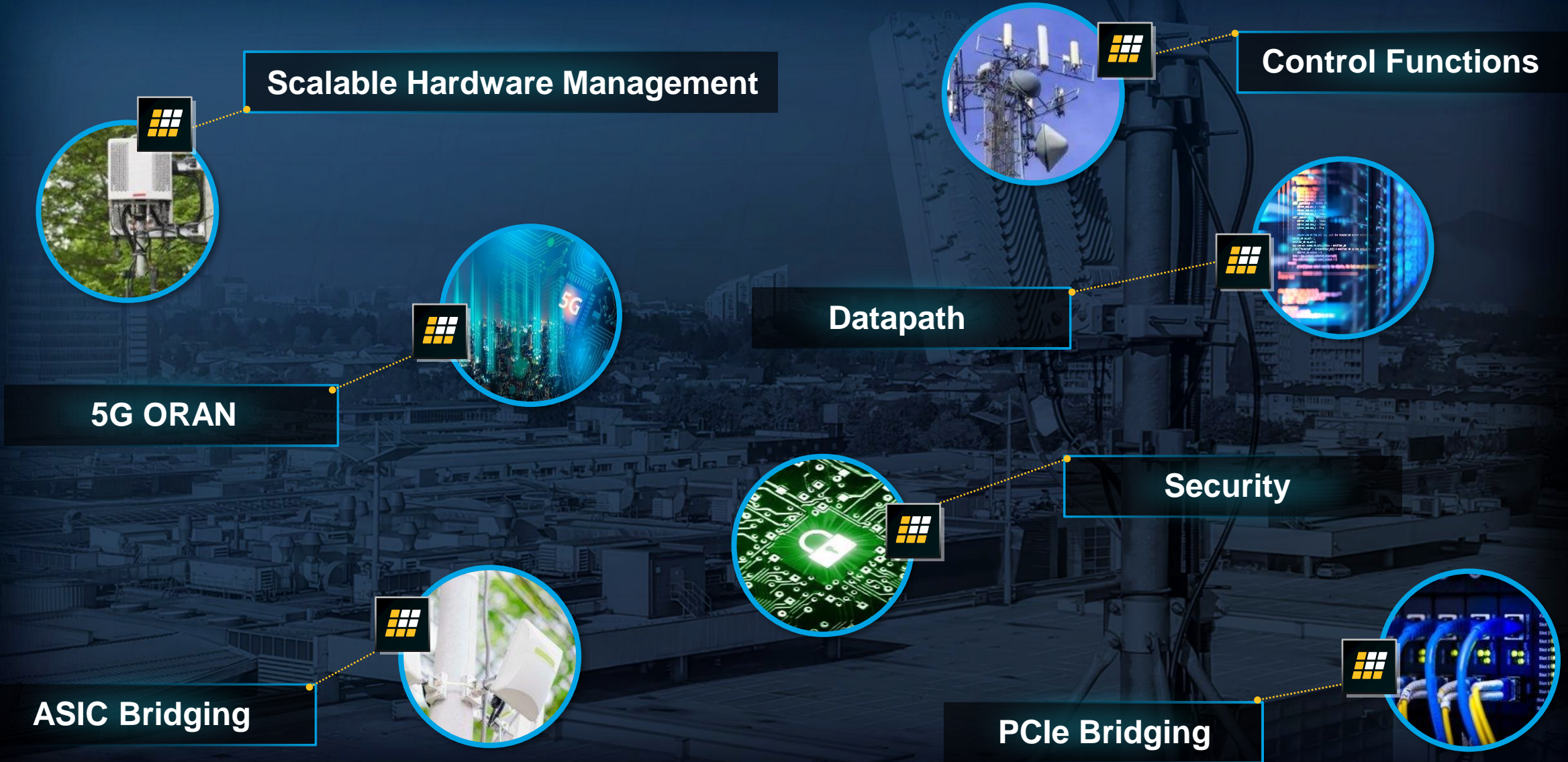
CONSUMER



Smart Home
On-the-Go

Leading the Industry in Low Power Programmability

Lattice Solves Communications Challenges



Lattice Solves Client Computing Challenges

Computer Vision AI

Image Quality Improvement

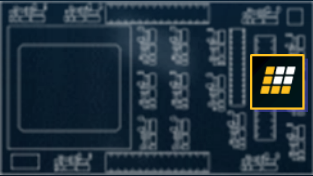
Enhanced Security

System Optimization

Client Computing is a Greenfield Opportunity for Lattice

Lattice Solves Datacenter Challenges

Offload
Attestation
Reporting



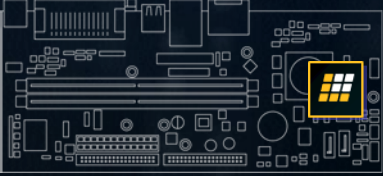
Hardware Acceleration



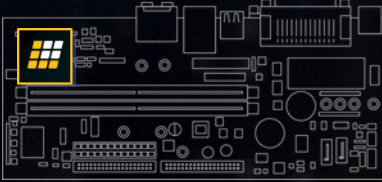
BMC
PROT / PFR
Attestation

Secure Control Module

Key Mgmt
Hot Swap
Hot Plug



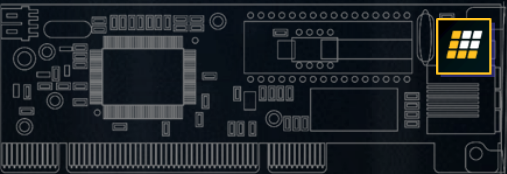
Storage Card



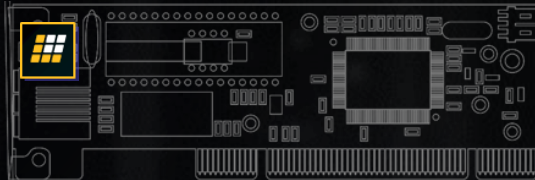
Power Control
Reporting
Offload

Network Card

Power Control
Reporting
Throttling

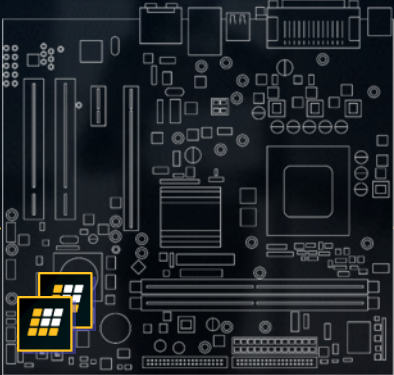


GPU Card



Control
Bridging
Aggregation

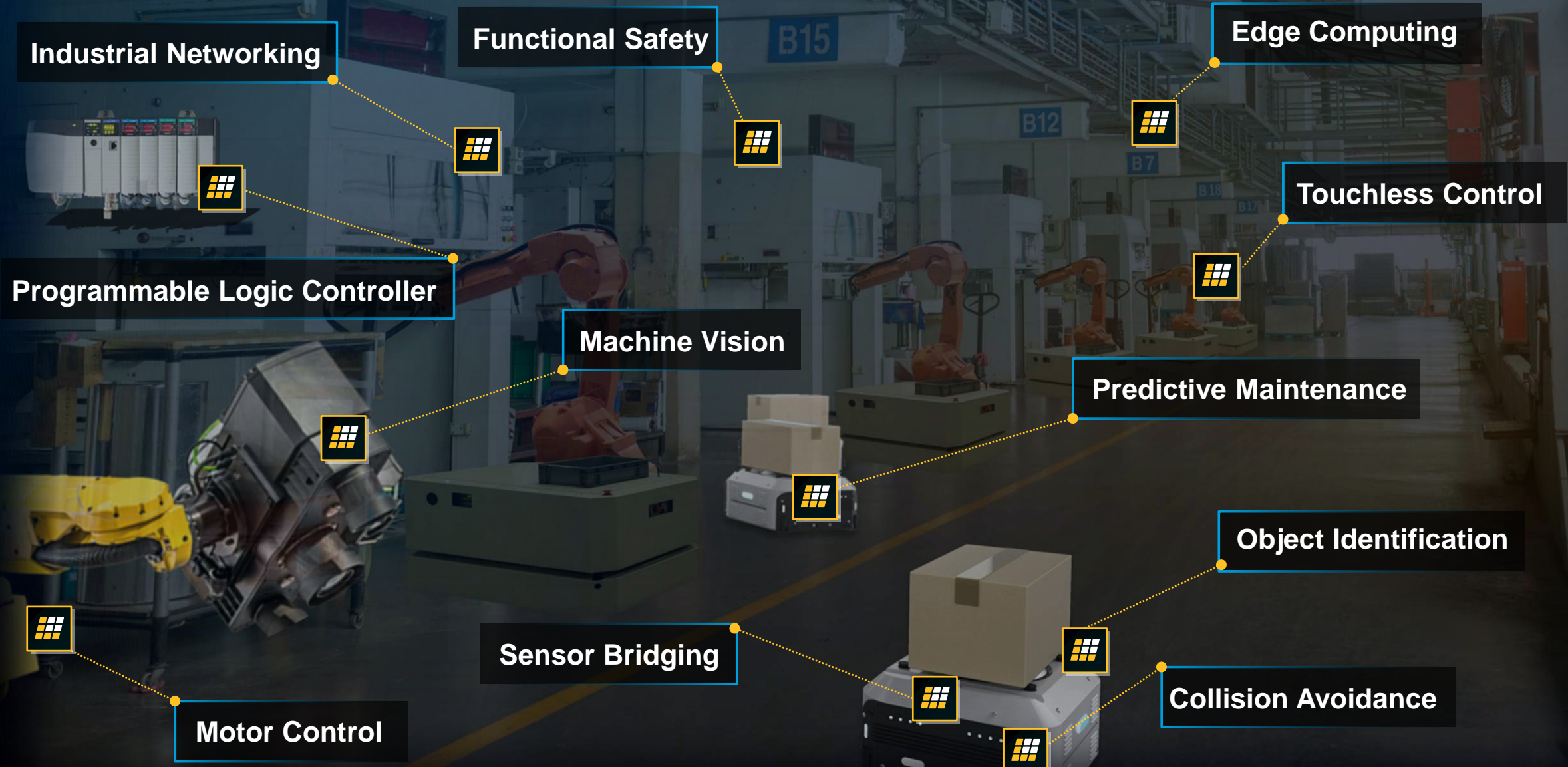
Add-in Cards



Motherboard (CPU Agnostic)

- Bridging
- I/O Expansion
- Board Control
- Power Sequence
- Signal Aggregation
- Glue Logic
- Fan Control
- Re-Timer

Lattice Solves Industrial Challenges



Lattice Solves Automotive Challenges

INFOTAINMENT

- De-Fog
- 360° Surround View
- Display Bridging
- ISP

IN-CABIN AI

- Human Presence Detection
- Driver Monitoring

ADAS

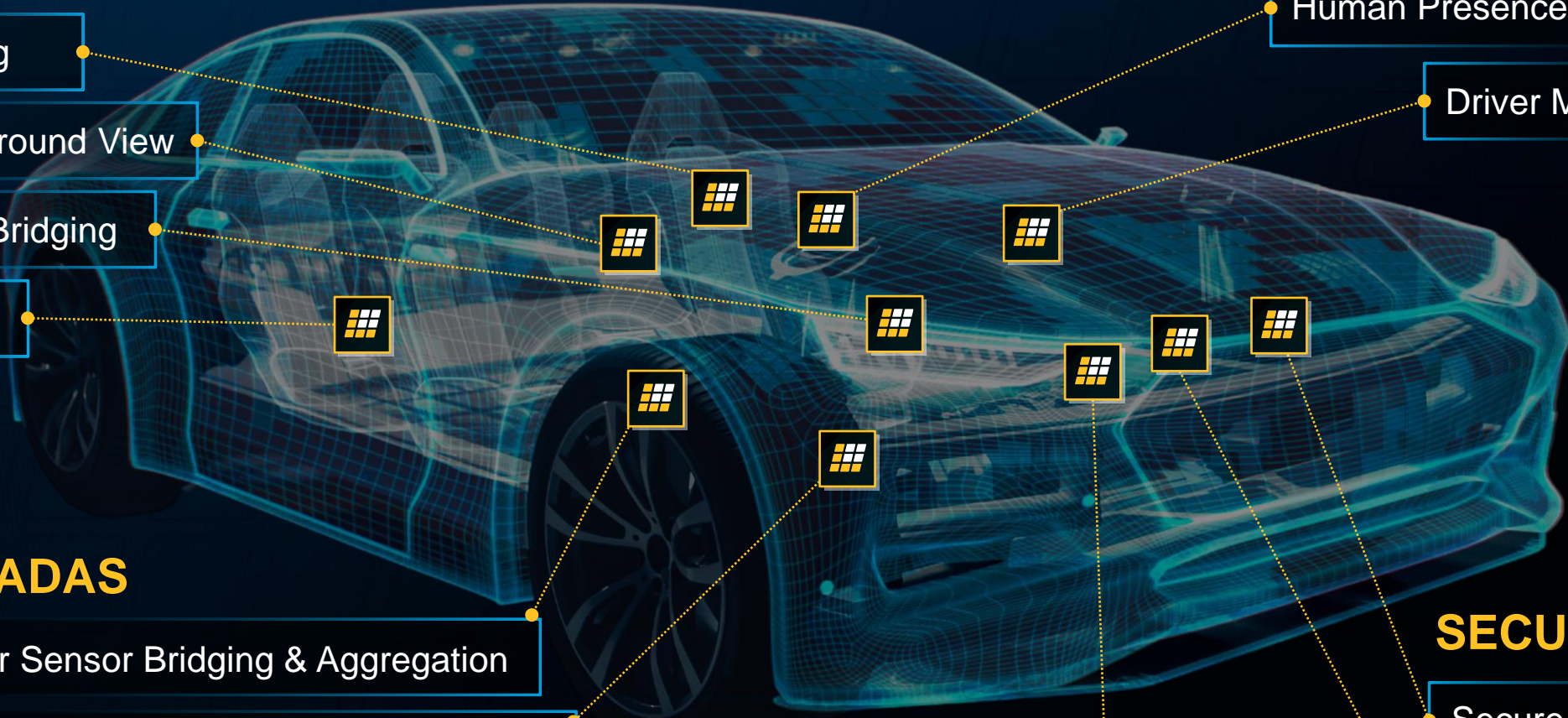
- Radar Sensor Bridging & Aggregation
- Image Sensor Bridging & Aggregation

HYBRID/ELECTRIC

- Inverter / Charger

SECURITY

- Secure Battery Mgt.
- Secure Boot



Lattice Solves Consumer Challenges

Drones



AR / VR



Smart Speaker



Smart Appliance



Consumer Robots



Video Surveillance



Wearable



Smart Doorbell



Smart Toys



Agenda

- 1 Company Overview
- 2 Products & Solutions
- 3 End Markets & Applications
- 4 Financials**

Lattice Semiconductor Q2 2023 Earnings Results Highlights

REVENUE

↑ **18%** YoY | **3%** QoQ

Record quarterly revenue of \$190.1M

“ We continued to grow both revenue and profitability in Q2 2023 on a year-over-year basis, with revenue increasing 18%, and net income on a GAAP basis growing 14% and 23% on a non-GAAP basis. We’re driving the largest product portfolio expansion in the Company’s history, which continues to create strong customer momentum. ”

Jim Anderson, President & CEO

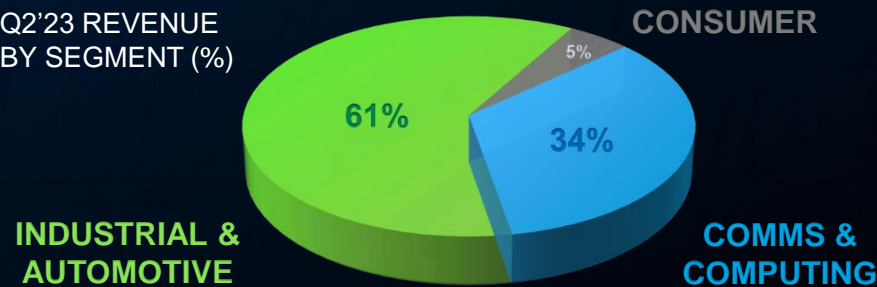
GROSS MARGIN

↑ **70.5%**

Expanded by 140 bps YoY

End Market Overview

Q2'23 REVENUE BY SEGMENT (%)



INDUSTRIAL & AUTOMOTIVE

↑ 55% YoY | ↑ 7% QoQ

COMMS & COMPUTING

↓ -11% YoY | ↓ -3% QoQ

EARNINGS PER SHARE

↑ **24%** YoY

\$0.52 in Q2 2023 vs \$0.42 in Q2 2023

Recent Product & Corporate Momentum



Detailed continued progress toward long-term strategy at Analyst & Investor Day 2023



Received multiple industry awards for product and sustainability innovation

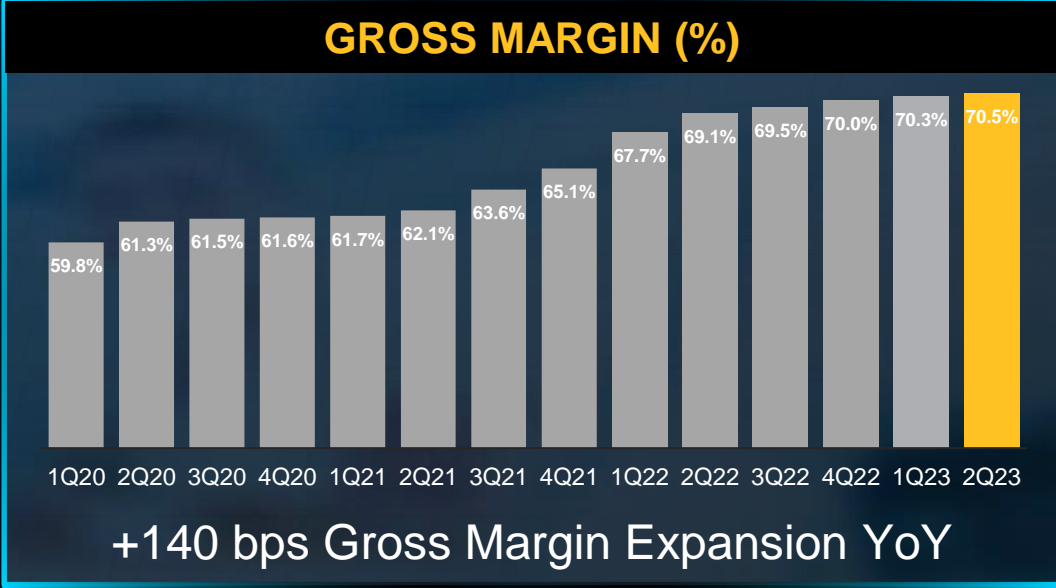


Lattice named a Top Workplace in the technology industry



Hosting Virtual Developers Conference Dec. 5-7, 2023

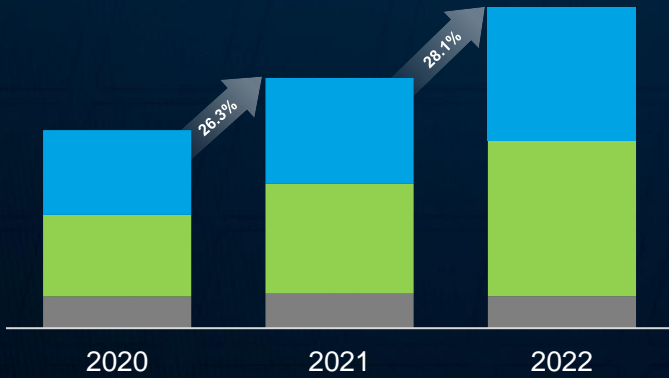
Q2 2023 Financial Highlights



Strong Financial Execution

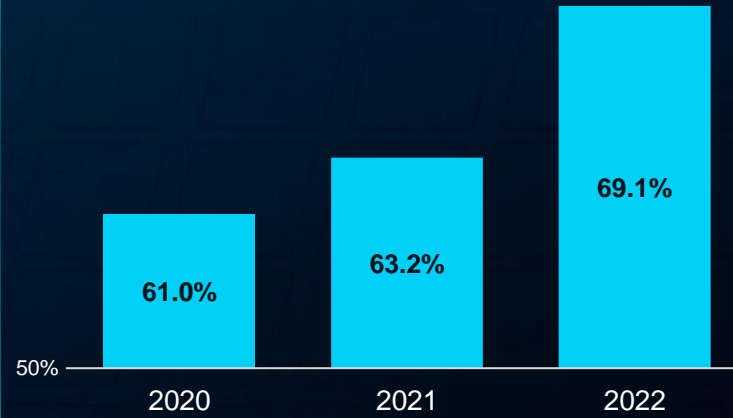
REVENUE

■ Consumer ■ Industrial & Auto ■ Comms & Computing



Growth in Core Strategic Markets

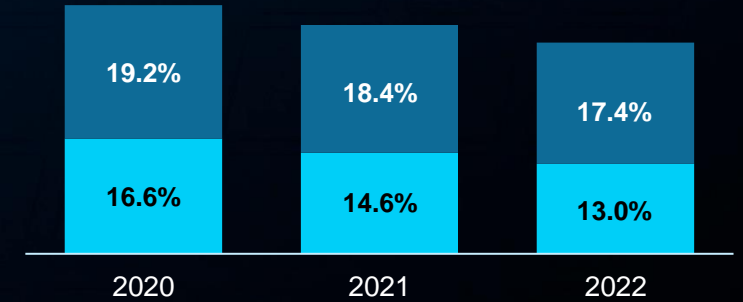
GROSS MARGIN*



Gross Margin Expansion

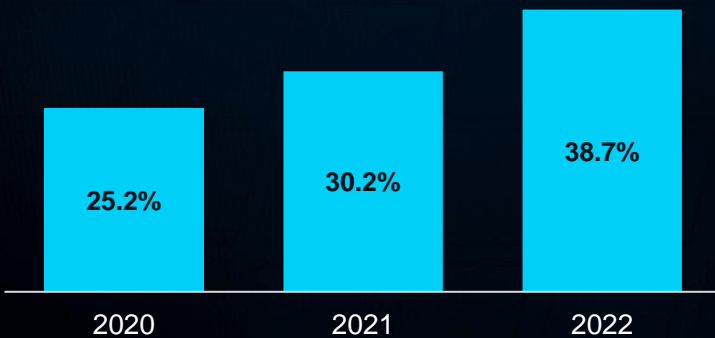
OPEX*

■ SG&A ■ R&D



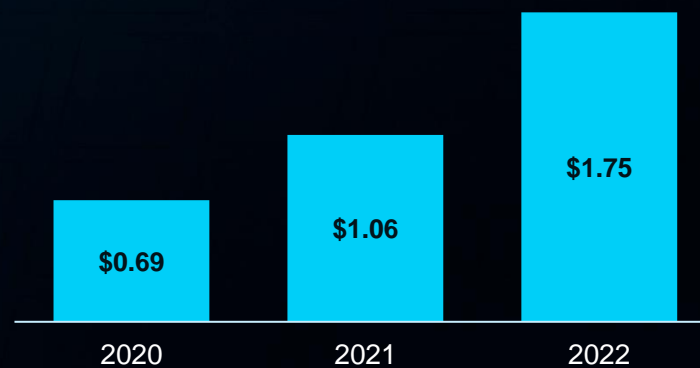
OpEx Discipline

OPERATING INCOME*



Record Operating Income

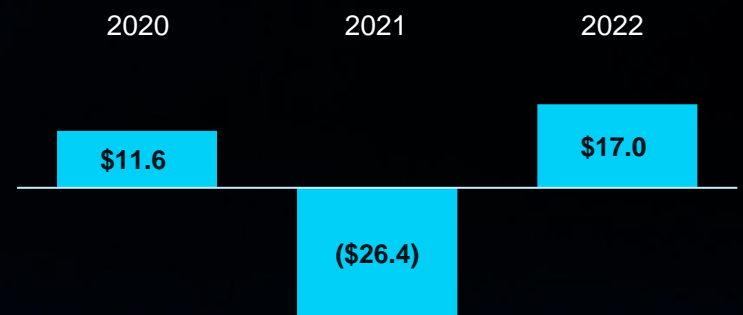
EARNINGS PER SHARE*



EPS Expansion

NET CASH

\$ Millions



Positive Net Cash Position



The Low Power Programmable Leader